

## STOCK *Myf5<sup>tm1Pas</sup>/J*

Stock No: 018626

Protocol 24051: Separated PCR Assay - Myf5<tm1Pas>

Version 1.2

### Notes

The genotyping protocol(s) presented here have been optimized for reagents and conditions used by The Jackson Laboratory (JAX). To genotype animals, JAX recommends researchers validate the assay independently upon receipt of animals into their facility. Reaction cycling temperature and times may require additional optimization based on the specific genotyping reagents used.

### Expected Results

Mutant = ~300 bp

Heterozygote = 212 bp and ~300 bp

Wild type = 212 bp

### JAX Protocol

#### Protocol Primers

PRIMER	5' LABEL	SEQUENCE 5' → 3'	3' LABEL	PRIMER TYPE	REACTION	NOTE
12265		GGC CTC TTC GCT ATT ACG C		Mutant Reverse	A	
15526		TCT CCC TCT CTG CTG AAT CC		Common	A, B	
15527		CAC GTG CTC CTC ATC GTC T		Wild type Reverse	B	

#### Reaction A

COMPONENT	FINAL CONCENTRATION
ddH <sub>2</sub> O	
Kapa 2G HS buffer	1.30 X
MgCl <sub>2</sub>	2.60 mM
dNTPS-kapa	0.26 mM
12265	0.50 uM
15526	0.50 uM
Glycerol	6.50 %
Dye	1.00 X
Kapa 2G HS taq polym	0.03 U/ul
DNA	

#### Cycling

STEP	TEMP °C	TIME	NOTE
1	94.0	--	
2	94.0	--	
3	65.0	--	-0.5 C per cycle decrease
4	68.0	--	
5		--	repeat steps 2-4 for 10 cycles (Touchdown)
6	94.0	--	
7	60.0	--	
8	72.0	--	
9		--	repeat steps 6-8 for 28 cycles
10	72.0	--	
11	10.0	--	hold

JAX uses a very high speed Taq (~1000 bp/sec), use cycling times recommended for your reagents.

JAX uses a 'touchdown' cycling protocol and therefore has not calculated the optimal annealing temperature for each set of primers.

### Reaction B

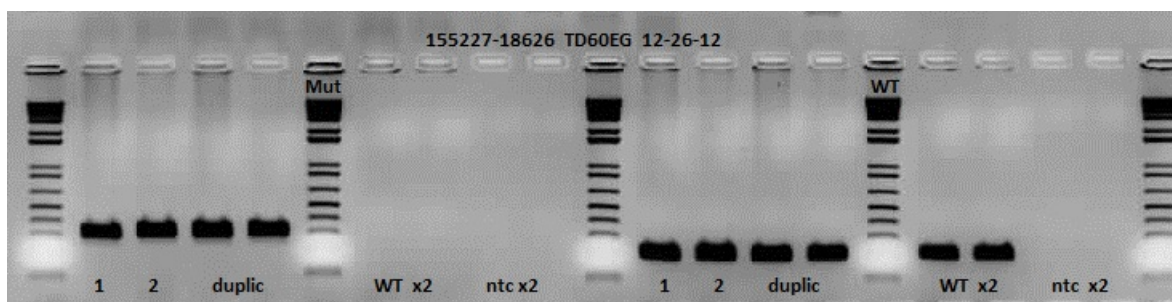
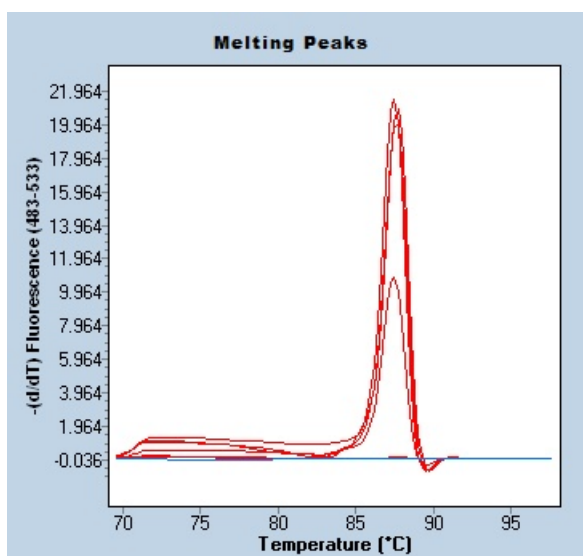
COMPONENT	FINAL CONCENTRATION
ddH2O	
Kapa 2G HS buffer	1.30 X
MgCl2	2.60 mM
dNTPS-kapa	0.26 mM
15526	0.50 uM
15527	0.50 uM
Glycerol	6.50 %
Dye	1.00 X
Kapa 2G HS taq polym	0.03 U/ul
DNA	

### Cycling

STEP	TEMP °C	TIME	NOTE
1	94.0	--	
2	94.0	--	
3	65.0	--	-0.5 C per cycle decrease
4	68.0	--	
5		--	repeat steps 2-4 for 10 cycles (Touchdown)
6	94.0	--	
7	60.0	--	
8	72.0	--	
9		--	repeat steps 6-8 for 28 cycles
10	72.0	--	
11	10.0	--	hold

JAX uses a very high speed Taq (~1000 bp/sec), use cycling times recommended for your reagents.

JAX uses a 'touchdown' cycling protocol and therefore has not calculated the optimal annealing temperature for each set of primers.



### Melting Peaks

