

## Cell Line Characterization

---

Cell Line ID:  
Passage #:  
Specimen Type:  
Indication for Study:

Lab #:  
PI:  
Contact Person:  
Email:  
Address:

Test Code:                      Date Received:  
Account #:                      Date Reported:  
PO #:                              Time in Culture:

Additional copies sent to:

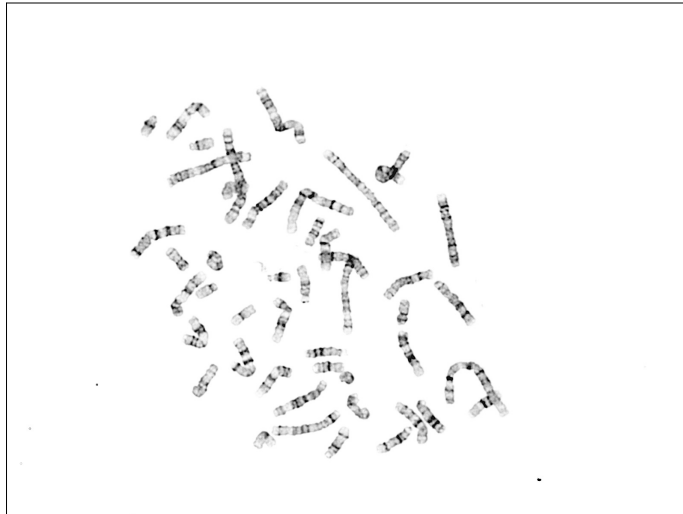
---

Banding Technique:              Band Resolution:  
Metaphases Counted:          Analyzed:          Karyotyped:

**RESULTS:**

Non-clonal Aberrations:

INTERPRETATION:



Result: 46,XY

