

Cell Line Characterization

Cell Line ID:
Passage #:
Specimen Type:
Indication for Study:

Lab #:
PI:
Contact Person:
Email:
Address:

Test Code: **Date Received:**
Account #: **Date Reported:**
PO #: **Time in Culture:**

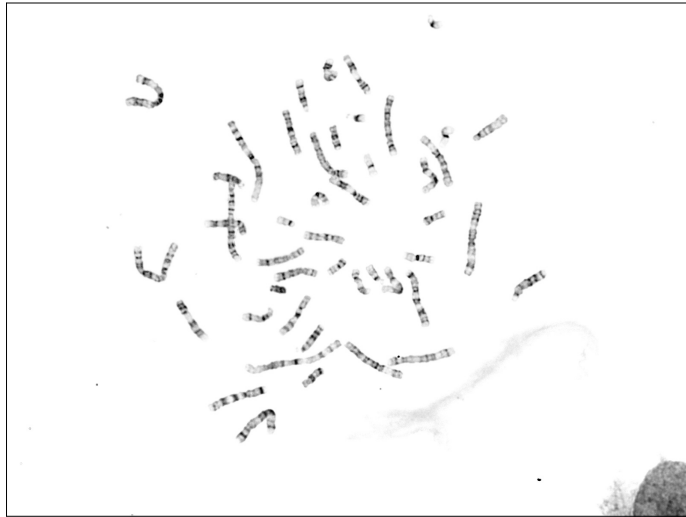
Additional copies sent to:

Banding Technique: **Band Resolution:**
Metaphases Counted: **Analyzed:** **Karyotyped:**

RESULTS:

Non-clonal Aberrations:

INTERPRETATION:



Result: 46,XY

