



<b>Document Code:</b>	FORM-0068A	<b>Document Type:</b>	FORM
<b>Revision:</b>	3.0	<b>Date Effective:</b>	08-27-21

## TITLE: KROMATiD CHROMOSOME ANALYSIS REPORT

### I. ASSAY INFORMATION

<b>Project Quote #</b>	Q200401
<b>Specimen Type</b>	iPSC
<b>Body Site</b>	N/A
<b>Sample ID</b>	78 Lead Hom (BB) (S005288)
<b>Cell Line Gender</b>	Male
<b>Passage number (or N/A)</b>	N/A
<b>Study Objective</b>	The purpose of this study is to characterize iPS cells grown <i>in vitro</i> , designated for cytogenetic analysis.

### II. CELL MAINTENANCE

<b>Culture vessel</b>	N/A
<b>Media</b>	N/A
<b>Density (estimated)</b>	N/A
<b>Culture atmosphere</b>	N/A
<b>Culture maintenance</b>	N/A

<b>Document Code:</b>	FORM-0068A	<b>Document Type:</b>	FORM
<b>Revision:</b>	3.0	<b>Date Effective:</b>	08-27-21

<b>Culture Maintenance Process Description</b>	N/A
<b>Analyst Initial/Date: N/A</b>	

### III. CULTURE HARVEST

<b>Culture Harvest Process Description</b>	N/A
<b>Analyst Initial/Date: N/A</b>	

Material	Usage information
<b>Harvest materials (trypsin, EDTA, etc.)</b>	Type: N/a LN/ Exp. Date: N/a
<b>Colcemid</b>	LN/ Exp. Date: N/a Concentration: 0.1 µg/ml (10 µl/ml) Incubation time: N/a
<b>Hypotonic</b>	LN/ Exp. Date: N/a Solution: N/a Incubation time:
<b>Fixative</b>	Prepared Fresh, day-of-use

<b>Document Code:</b>	FORM-0068A	<b>Document Type:</b>	FORM
<b>Revision:</b>	3.0	<b>Date Effective:</b>	08-27-21

#### IV. STAINING

Solution Type	Lot#	Exp. Date	Solution Type	Lot#	Exp. Date
Isoton II Diluent	4710610	07/12/22	Wright Stain	210317	03/17/22
Pancreatin	SLCD9444	01/11/23	Gurr Buffer	210818	09/18/21
FBS	19J079	11/4/22	Permout	210201-01	02/1/23

<b>Process Description</b>	<p>A sample of fixed cells labeled 78 Lead Hom (BB) (KromaTiD Sample ID S005288) was received at KromaTiD on 08-26-21.</p> <p>The fixed cells were washed twice with fixative (prepared fresh day-of-use) and the O.D. was adjusted to 0.0250. Drops of the final cell suspension were placed on clean slides and aged for 60 minutes at 90°C. Slides were digested in a pancreatin solution with Isoton II diluent. The enzymatic reaction was then stopped by rinsing with FBS, followed by application of a stain solution (3:1 Wright/Gurr buffer) which was poured on the slides so that it covered the entire surface. After staining for up to 1 minute, slides were washed with de-ionized water for 1-5 seconds and air dried. The mounting medium Permout was applied to the slides, a coverslip was placed on the slide and the slides were scanned on the microscope.</p>
	<b>Analyst Initial/Date: MV 08-30-21 through 09-15-21</b>

#### TEST DESCRIPTION:

G-banding with trypsin treatment and Giemsa stain (GTG-banding) is used in cytogenetics to produce a visible karyotype by staining metaphase chromosomes. This technique allows each chromosome to be distinguished by its characteristic banding pattern. G-banding is useful in assessing structural abnormalities in individual chromosomes, as well as extra or missing chromosomes within a cell. Industry-standard protocols for scoring and describing results were used (ISCN 2016: An International System for Human Cytogenomic Nomenclature).

<b>Document Code:</b>	FORM-0068A	<b>Document Type:</b>	FORM
<b>Revision:</b>	3.0	<b>Date Effective:</b>	08-27-21

## V. RESULTS

<b>Cells Counted</b>	20	<b>Total Karyograms</b>	2
<b>Cells Analyzed</b>	20	<b>Average Band Resolution</b>	350
<b>Image File Location</b>	Jax Gbanding_S005288		

### 5.1 CHROMOSOME COUNT PER 20 METAPHASES

Of the 20 cells counted, 20 contained 46 chromosomes (100%). *Cells containing greater than 57 chromosomes are recorded as polyploid.* The polyploid frequency was 0%, based on the metaphases counted.

### 5.2 CHROMOSOME ABERRATION DATA

The chromosome aberration data via G-band for the 20 metaphases examined is summarized in attached case report cell list. 0 chromosome aberrations were found in the 20 cells analyzed with 0% of the cells aberrant.

\*Note: Cells with aneuploidy gain/loss were found to be non-clonal, and therefore not included in the aberration data below.

<b>Tech Summary</b>		<b>Additional Comments</b>
<b>Karyotype</b>	46,XY[20]	Normal Male Karyotype
<b>Cells Analyzed</b>	20	
<b>Normal Cells</b>	20	Random loss/gain cells normalized
<b>Abnormal Cells</b>	0	
<b>Aberration Type</b>	N/A	
<b>Aberration %</b>	0%	

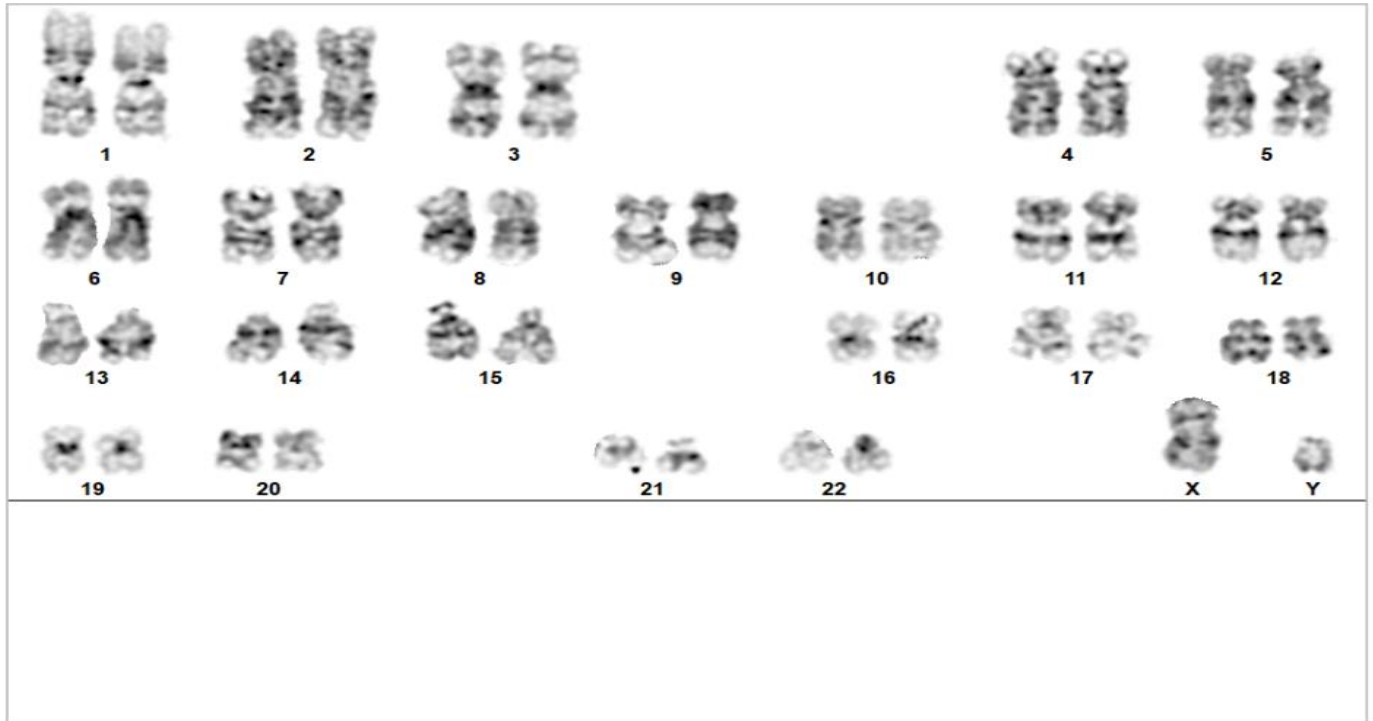
<b>Document Code:</b>	FORM-0068A	<b>Document Type:</b>	FORM
<b>Revision:</b>	3.0	<b>Date Effective:</b>	08-27-21

### 5.3. INTERPRETATION/ SIGNIFICANCE:

G-banded chromosome analysis of metaphase cells designated as 78 Lead Hom (BB) (KromaTiD Sample ID S005288) show a normal male karyotype 46,XY[20].

The other abnormalities/aberrations detected were non-clonal, and were designated as low level mosaicism or random gain/loss.

### 5.4 REPRESENTATIVE IMAGES:



**Cell Results:** Karyotyped: 46,XY

**Cell Notes:**

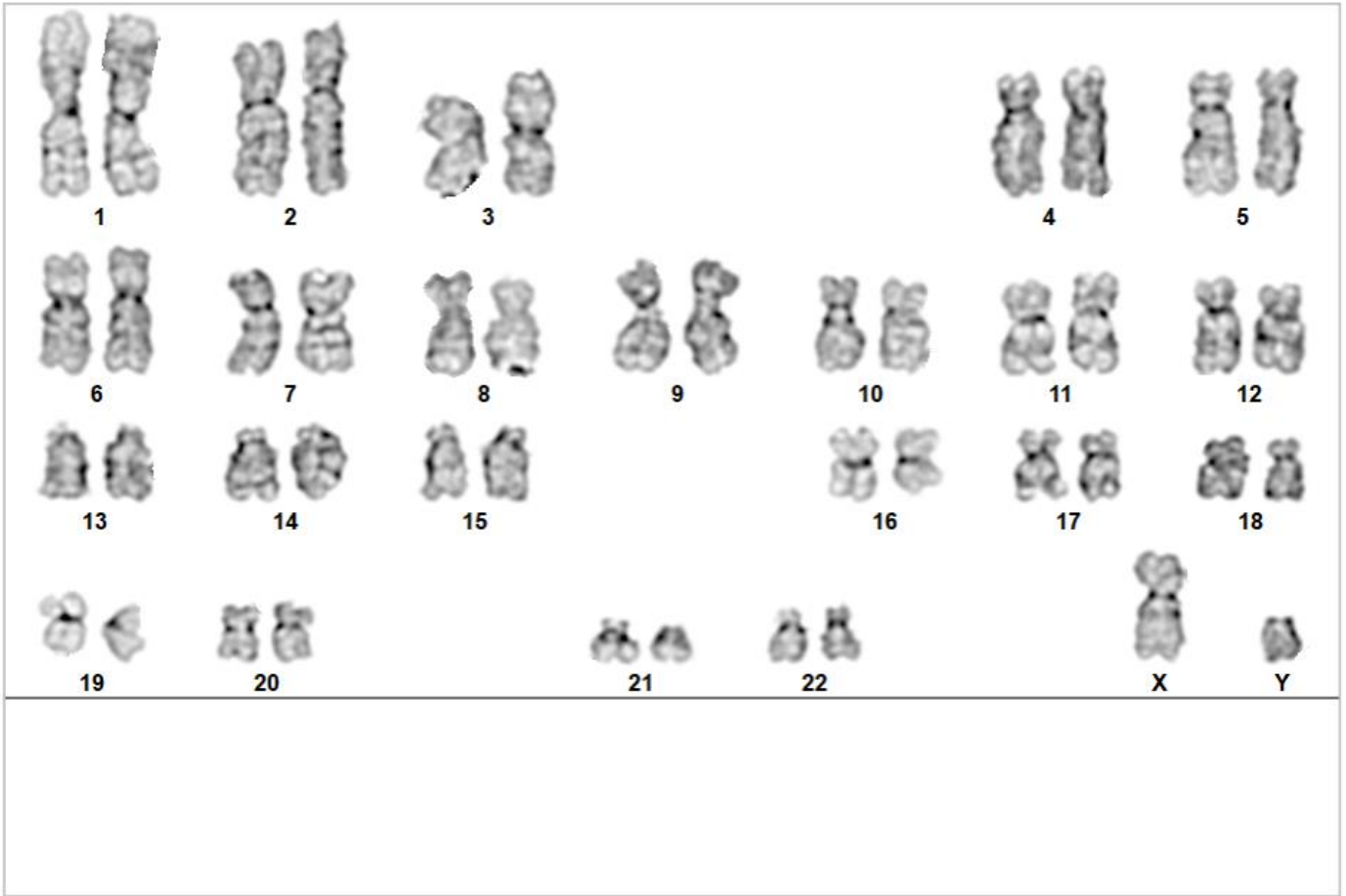


**Label - Slide/Cell:** S005288 - 3/18

**X,Y:** 17.9 , 30.1

**Report Date:** Wednesday, September 15, 2021

<b>Document Code:</b>	FORM-0068A	<b>Document Type:</b>	FORM
<b>Revision:</b>	3.0	<b>Date Effective:</b>	08-27-21



**Cell Results:** Karyotyped: 46,XY

**Cell Notes:**



**Label - Slide/Cell:** S005288 - 4/9

**X,Y:** 10.8 , 21.0

**Report Date:** Wednesday, September 15, 2021

<b>Document Code:</b>	FORM-0068A	<b>Document Type:</b>	FORM
<b>Revision:</b>	3.0	<b>Date Effective:</b>	08-27-21

**Limitations:** *This assay allows for microscopic visualization of numerical and structural chromosome abnormalities. The size of structural abnormality that can be detected is >3-10Mb, dependent upon the G-band resolution obtained from this specimen. For the purposes of this report, band level is defined as the number of G-bands per haploid genome. Detection of heterogeneity of clonal cell populations in this specimen is limited by the number of metaphase cells analyzed, documented above as "number of cells counted". Results are for Research Use Only, and should not be used for clinical purposes.*

**Completed By/Date:**  DocuSigned by:  
Michael Vernich 9/24/2021  
B510035B47034EE...

**Michael Vernich**  
Cytogenetics Associate

**Reviewed By/ Date:**  DocuSigned by:  
Ivan Perez 9/24/2021  
78884964FB9848A...

**Ivan Perez**  
Cytogenetics Technologist III

**Approved By/Date:**  DocuSigned by:  
Marissa Rodrigues 9/24/2021  
5FAF272CE1894D0...

**Marissa Rodrigues**  
QA Manager

LIMS ID: S005288

LIMS Sample Name: 78 Lead Hom (BB)

## Cells Information:

#	Slide	Cell	Coordinates	Results	Analysis State	State By
<b>Slide: Name: 1 Label: S005288</b>						
1	1	26	7.54 X 37.83	Karyotyped: 46,XY	Karyotyped	mvernich
2	1	27	7.65 X 39.19	Karyotyped: 46,XY	Karyotyped	mvernich
3	1	29	7.55 X 41.60	Karyotyped: 46,XY	Karyotyped	mvernich
4	1	36	13.12 X 46.71	Karyotyped: 46,XY	Karyotyped	mvernich
<b>Slide: Name: 3 Label: S005288</b>						
5	3	9	9.77 X 23.35	Karyotyped: 46,XY	Karyotyped	mvernich
6	3	18	17.94 X 30.13	Karyotyped: 46,XY	Karyotyped	mvernich
7	3	22	12.82 X 33.19	Karyotyped: 46,XY	Karyotyped	mvernich
8	3	24	9.33 X 33.74	Karyotyped: 46,XY	Karyotyped	mvernich
9	3	30	17.13 X 38.21	Karyotyped: 46,XY	Karyotyped	mvernich
10	3	36	8.56 X 41.17	Karyotyped: 46,XY	Karyotyped	mvernich
11	3	42	15.92 X 42.40	Karyotyped: 46,XY	Karyotyped	mvernich
<b>Slide: Name: 4 Label: S005288</b>						
12	4	2	13.73 X 16.21	Karyotyped: 46,XY	Karyotyped	mvernich
13	4	6	12.53 X 18.46	Karyotyped: 46,XY	Karyotyped	mvernich
14	4	9	10.82 X 20.99	Karyotyped: 46,XY	Karyotyped	mvernich
15	4	15	15.37 X 22.94	Karyotyped: 46,XY	Karyotyped	mvernich
16	4	19	12.45 X 25.24	Karyotyped: 46,XY	Karyotyped	mvernich
17	4	26	12.04 X 32.78	Karyotyped: 46,XY	Karyotyped	mvernich
18	4	31	7.60 X 38.36	Karyotyped: 46,XY	Karyotyped	iperez
<b>Slide: Name: 5 Label: S005288</b>						
19	5	9	11.90 X 12.62	Karyotyped: 46,XY	Karyotyped	mvernich
20	5	27	9.61 X 37.06	Karyotyped: 46,XY	Karyotyped	mvernich