

**Mice:**

Stock No. 021614 B6.Cg-Tg(S100A8-cre,-EGFP)1lw/J (n=3 ; hemizygote)

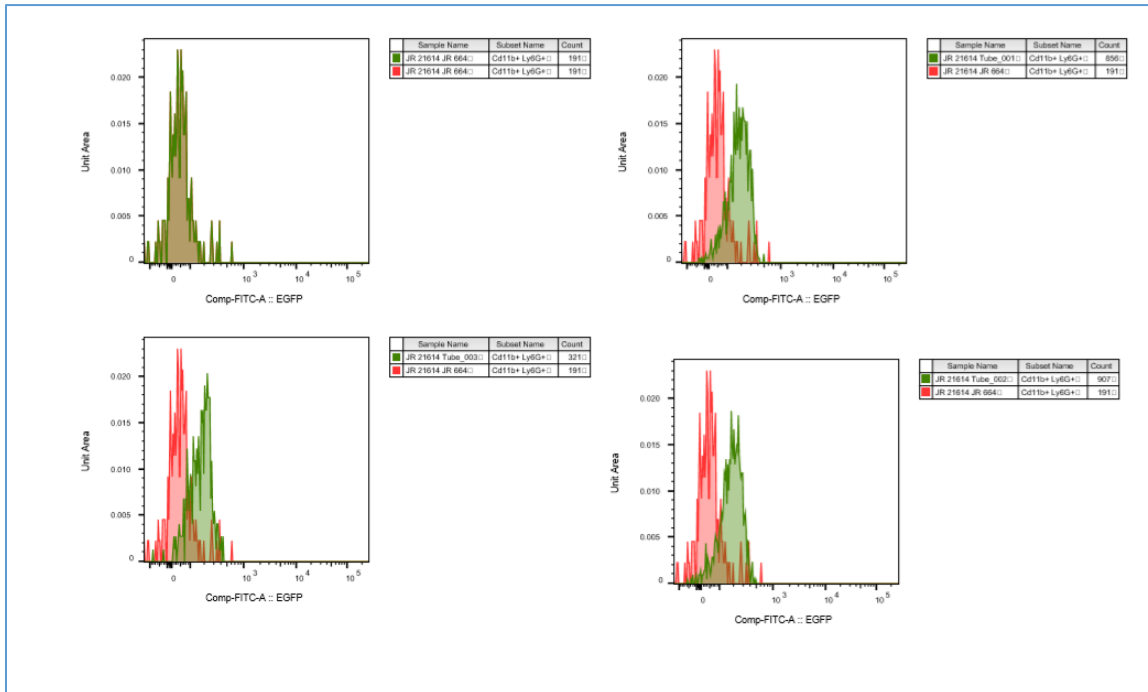
Stock No. 000664 C57BL/6J (negative control)

**Procedures:**

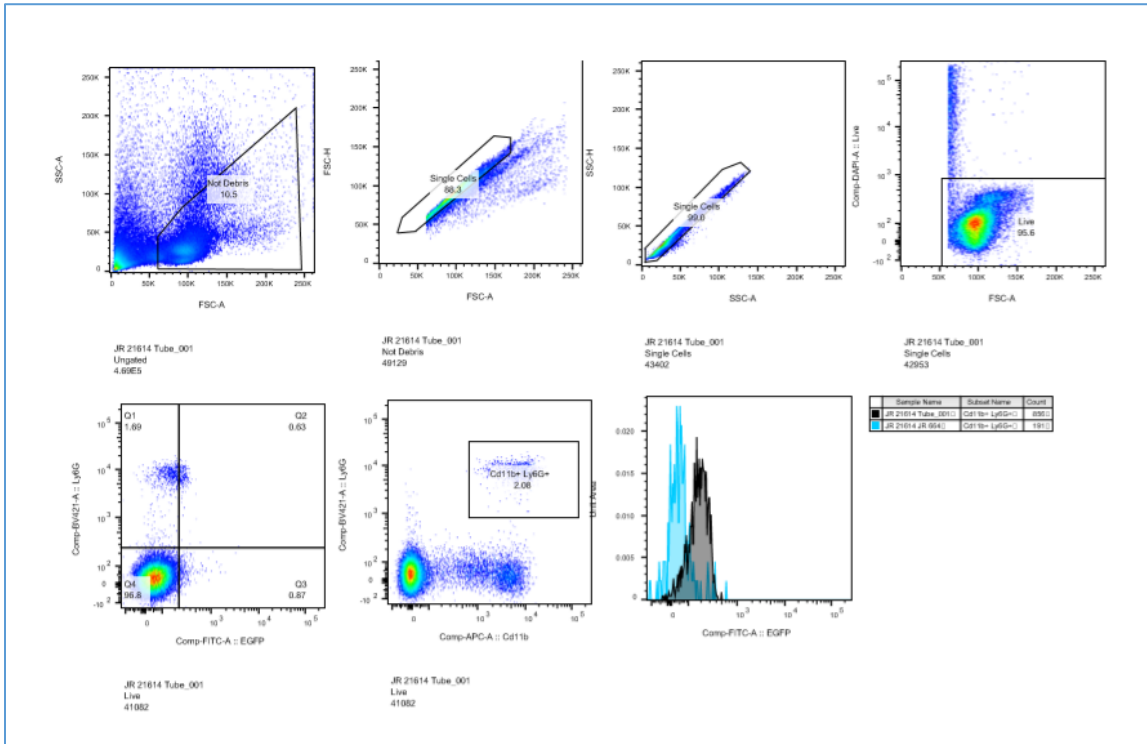
Peripheral blood collected for flow cytometry analysis of GFP and CD11b Ly6G.

**Results:**

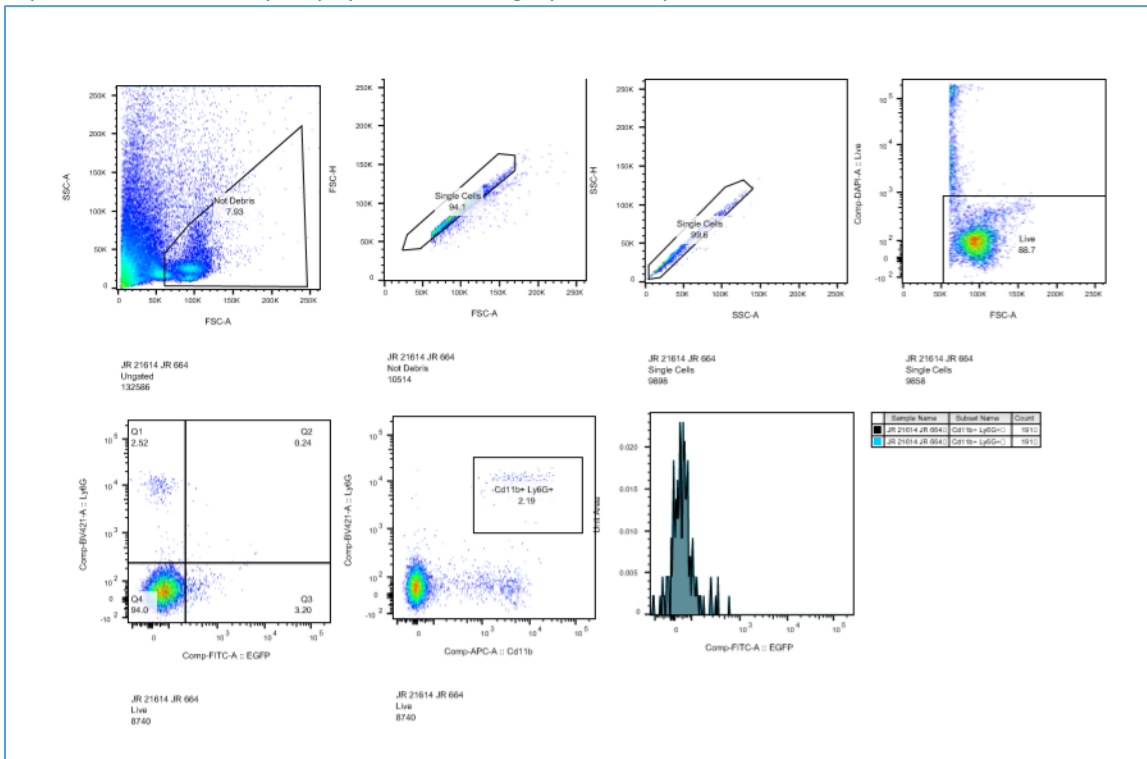
**Figure 1 - GFP expression:** All 021614 samples show GFP (top right [green], bottom left [green], bottom right [green]). All 000664 samples show no GFP (top left [both green and red], top right [red], bottom left [red], bottom right [red]).



**Figure 2 - 021614 GFP expression in CD11b Ly6G (neutrophil) population:** Representative graph showing GFP expression in 021614 cells, specifically the CD11b Ly6G population [last graph].



**Figure 3 - 000664 GFP expression in CD11b Ly6G (neutrophil) population:** 000664 cells shows no GFP expression in CD11b Ly6G population [last graph], as expected.



**Conclusion:**

021614 have GFP in CD11b+ Ly6G+ population (neutrophils). No positive controls were available, but CS&T (Cytometer Setup & Tracking) beads were run defining and verifying positive and negative in all wavelengths.